

Office / Showroom | ±3,334 SF For Lease



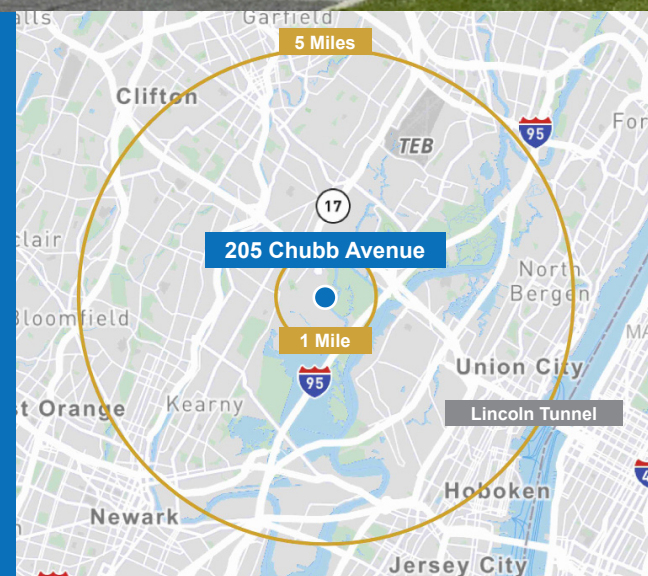
# 205 Chubb Avenue

205 Chubb Avenue | Lyndhurst, NJ 07071



## PROPERTY DETAILS

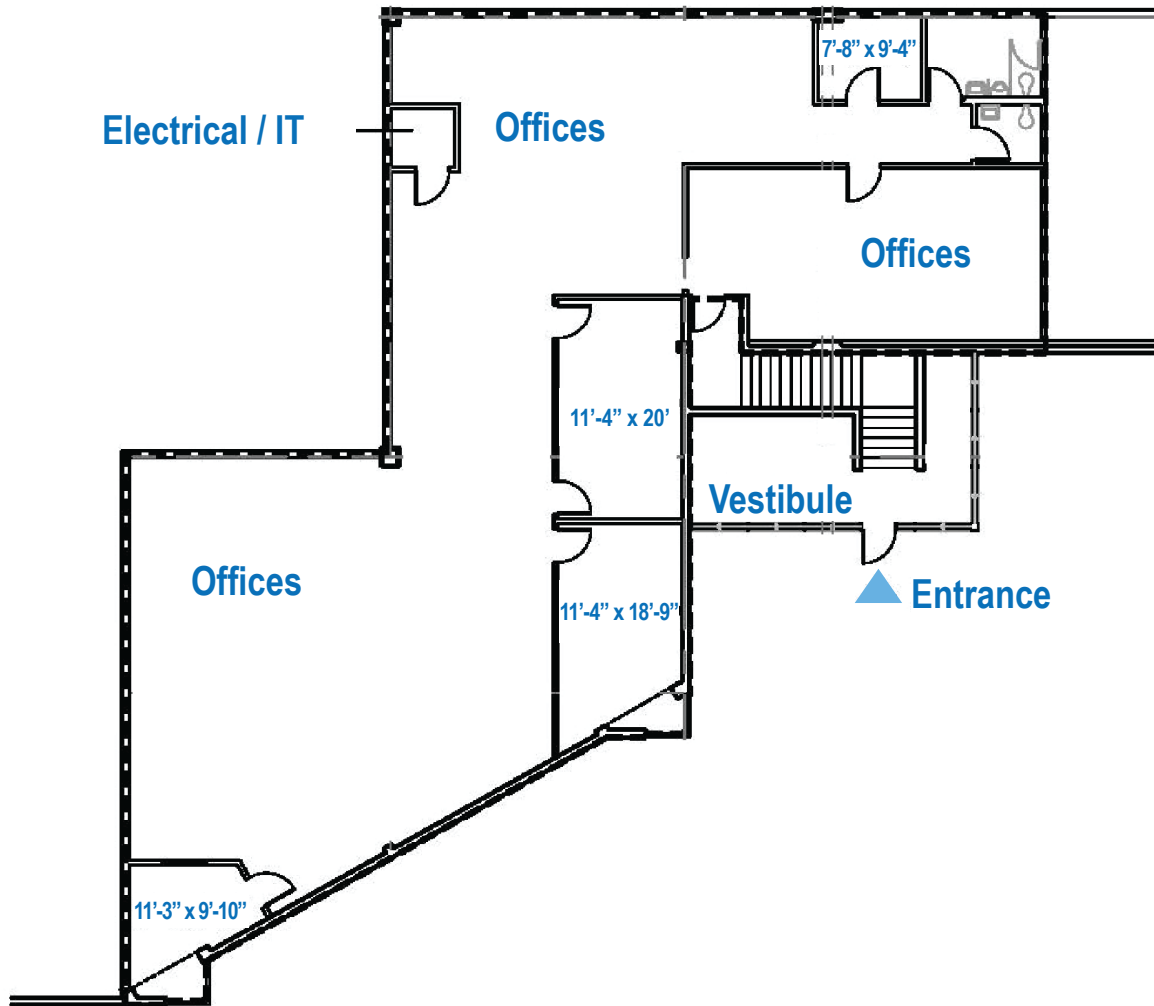
- + Views of Manhattan
- + NJ Transit bus stop at building
- + Corporate business park setting
- + ±148,395 SF total building size
- + ±3,334 SF available 2nd floor office
- + 7 acres
- + Wet sprinkler system
- + Rooftop HVAC
- + Immediate availability
- + Excellent access to Routes 3, 17 and the New Jersey Turnpike



# For Lease

±3,334 SF OFFICE / SHOWROOM AVAILABLE

205 Chubb Avenue | Lyndhurst, NJ 07071



## Contact Us

**Larry Schiffenhaus**  
Executive Vice President  
o +1 201 712 5809  
c +1 201 532 5092  
larry.schiffenhaus@cbre.com

**Brian Golden**  
Executive Vice President  
o +1 201 712 5607  
c + 1 732 284 8451  
brian.golden@cbre.com

**Andrew Gunst**  
Senior Associate  
o +1 201 712 5649  
c + 1 908 642 1415  
brian.golden@cbre.com



© 2025 CBRE, Inc. All rights reserved. This information has been obtained from sources believed reliable but has not been verified for accuracy or completeness. CBRE, Inc. makes no guarantee, representation or warranty and accepts no responsibility or liability as to the accuracy, completeness, or reliability of the information contained herein. You should conduct a careful, independent investigation of the property and verify all information. Any reliance on this information is solely at your own risk. CBRE and the CBRE logo are service marks of CBRE, Inc. All other marks displayed on this document are the property of their respective owners, and the use of such marks does not imply any affiliation with or endorsement of CBRE. Photos herein are the property of their respective owners. Use of these images without the express written consent of the owner is prohibited.

205chubbavenue.com

