

Industrial Unit | ±31,809 SF For Lease



CBRE

205 Chubb Avenue

205 Chubb Avenue | Lyndhurst, NJ 07071



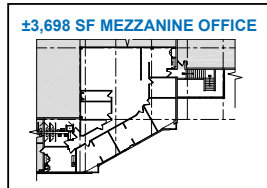
205chubbavenue.com

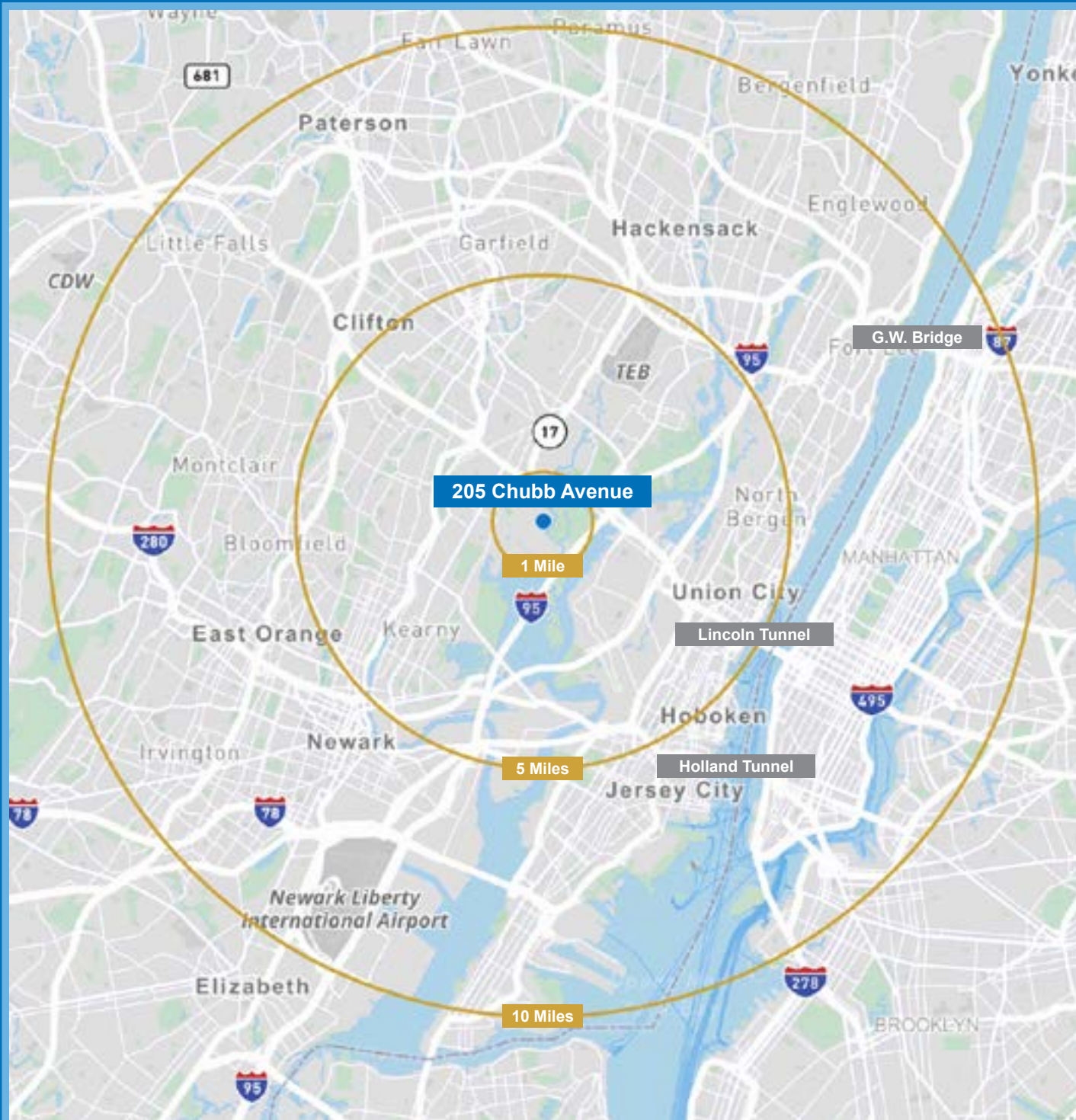
FACILITY

- + ±148,395 SF total building size
- + ±31,809 SF available

±31,809 SF - UNIT 130

- + ±31,809 SF available
- + ±23,478 SF warehouse
- + ±4,665 SF 1st floor office
- + ±3,698 SF mezzanine office
- + 22' ceiling height
- + 40' x 40' column spacing
- + 3 dock doors
- + Wet sprinkler system
- + 400 amps
- + Available Q2/Q3 2025





LOCATION OVERVIEW

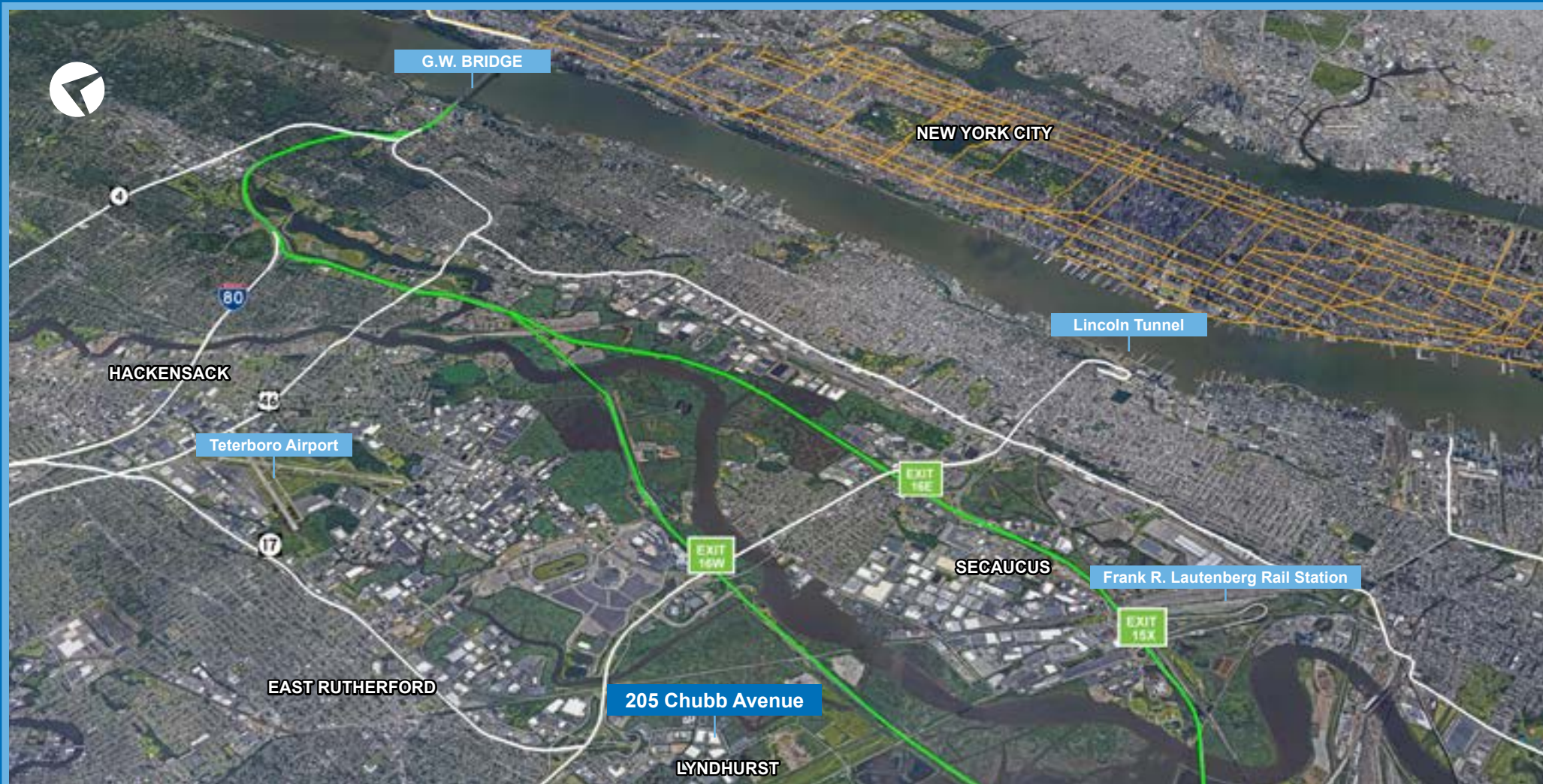
- + Excellent access to and the
- + Views of Manhattan
- + New Jersey Transit stop at building
- + Corporate business park setting
- + 14 minutes to the Lincoln Tunnel
- + 19 minutes to George Washington Bridge
- + 19 minutes to Newark Liberty Int'l Airport
- + 24 minutes to Ports Newark / Elizabeth
- + 25 minutes to the Holland Tunnel

For Lease

±31,809 SF INDUSTRIAL UNIT AVAILABLE

205 Chubb Avenue | Lyndhurst, NJ 07071

CBRE



Contact Us

Larry Schifffenhaus
Executive Vice President
o +1 201 712 5809
c +1 201 532 5092
larry.schifffenhaus@cbre.com

Brian Golden
Executive Vice President
o +1 201 712 5607
c + 1 732 284 8451
brian.golden@cbre.com

Andrew Gunst
Senior Associate
o +1 201 712 5649
c + 1 908 642 1415
brian.golden@cbre.com

205chubbavenue.com



© 2025 CBRE, Inc. All rights reserved. This information has been obtained from sources believed reliable but has not been verified for accuracy or completeness. CBRE, Inc. makes no guarantee, representation or warranty and accepts no responsibility or liability as to the accuracy, completeness, or reliability of the information contained herein. You should conduct a careful, independent investigation of the property and verify all information. Any reliance on this information is solely at your own risk. CBRE and the CBRE logo are service marks of CBRE, Inc. All other marks displayed on this document are the property of their respective owners, and the use of such marks does not imply any affiliation with or endorsement of CBRE. Photos herein are the property of their respective owners. Use of these images without the express written consent of the owner is prohibited.